

**For Immediate Release:**

## **The only chromagenic medium that detects both Salmonella and Shigella!**

**HardyCHROM™ SS Detects Enteric Pathogens by Simple Color Change**

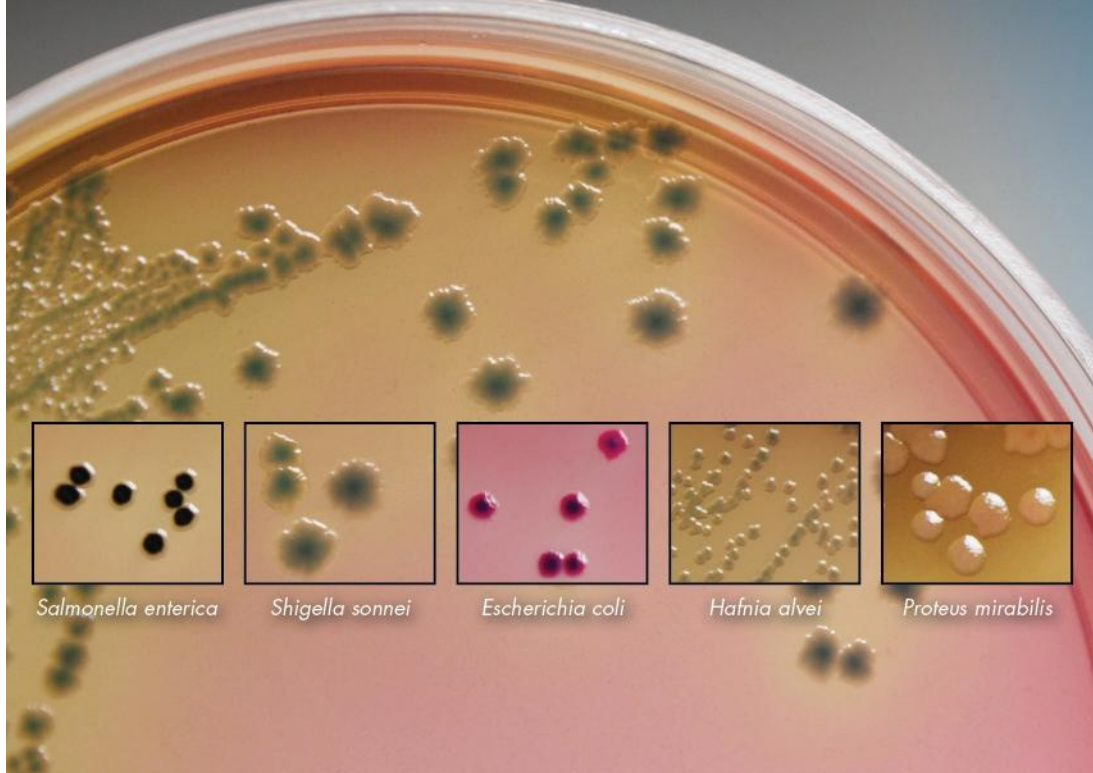


Photo by Daniel Berger

*Shigella sonnei* growing on HardyCHROM SS

**Santa Maria, California; January 10, 2011** – Hardy Diagnostics, an ISO certified biomedical firm, is pleased to announce the release of HardyCHROM™ SS, a highly selective chromogenic medium recommended for use as a primary screening medium for the isolation and differentiation of *Salmonella* and *Shigella* spp. from stool cultures. These two pathogens can be easily distinguished from non-pathogenic enteric bacteria based on colony color. Differentiation of *Salmonella* and *Shigella* spp. from non-pathogenic bacteria is accomplished by three mechanisms: chromogenic reactions, carbohydrate fermentation, and hydrogen sulfide production. *Shigella* and non-H<sub>2</sub>S producing salmonella spp. appear as turquoise colonies. H<sub>2</sub>S producing salmonella will develop colonies with black centers.



HardyCHROM™ SS represents the first and only chromogenic culture medium that simultaneously detects both *Salmonella* and *Shigella* spp. while ruling out non-pathogenic enteric bacteria (both lactose and non-lactose-fermenting organisms). Most *Proteus* spp. do not produce black colonies (H<sub>2</sub>S) and do not produce a color change on this medium; and therefore are not confused with *Salmonella* and *Shigella*.

HardyCHROM™ SS provides superior differentiation of colonies, reduces the need for secondary testing of isolates, and thus results in less false-positive results. HardyCHROM™ SS also allows the laboratory technologist to use fewer culture media plates when setting up stool cultures.

### **ABOUT HARDY DIAGNOSTICS**

Hardy Diagnostics is an FDA licensed and ISO 13485 certified manufacturer of medical devices for microbiological procedures in both clinical and industrial laboratories. The company manufactures over 3,000 products for the culture and identification of bacteria and fungi from its Santa Maria, California headquarters. Currently over 6,000 laboratories are serviced by Hardy Diagnostics throughout the nation.

The company was founded in 1980 by Jay Hardy, a Clinical Laboratory Scientist from Santa Barbara, CA. Today, Hardy Diagnostics maintains six distribution centers throughout the U.S. and exports products to over 30 foreign distributors.

The company's mission is to partner with its laboratory customers to prevent and diagnose disease. For more information, visit [www.HardyDiagnostics.com](http://www.HardyDiagnostics.com).

###

#### **Contact Information:**

Contact Person: Christopher Catani  
Company Name: HARDY DIAGNOSTICS

Address: 1430 West McCoy Lane, Santa Maria, CA 93455  
Phone Number: (805) 346-2766, Ext: 5696  
Fax Number: (805) 928-2950  
Email Address: [CataniC@HardyDiagnostics.com](mailto:CataniC@HardyDiagnostics.com)  
Company Website: [www.HardyDiagnostics.com](http://www.HardyDiagnostics.com)

1/11/11cc

*1430 West McCoy Lane, Santa Maria, California, USA ~ Ph: (805) 346-2766, Fx: (805) 346-2760  
Website: [www.HardyDiagnostics.com](http://www.HardyDiagnostics.com) ~ Email: [Sales@HardyDiagnostics.com](mailto:Sales@HardyDiagnostics.com)  
California ~ Washington ~ Utah ~ Arizona ~ Ohio ~ Texas*