

# Bovine Mastitis

Products for Microbiological Analysis





Hardy Diagnostics  
has everything for  
your laboratory!

# SAVE MONEY

Now you have a choice for obtaining your supplies for mastitis testing. Hardy Diagnostics manufactures a complete line of culture media and supplemental products specifically for bovine mastitis.

# Mastitis Microbiology Made Easy!

*Our products are designed to aid in the rapid identification of bovine mastitis organisms and to enhance your mastitis control program.*

## ➔ **Speed**

Obtain reliable results in 24 hours for *Staphylococcus* and *Streptococcus*.

## **Performance**

➔ All our mastitis media formulas are engineered for superior performance and consistency.

## **Availability**

Hardy manufactures and sells

➔ directly to you. You can stock your entire laboratory with one purchase order. Choose from thousands of microbiology products.

[www.HardyDiagnostics.com](http://www.HardyDiagnostics.com)

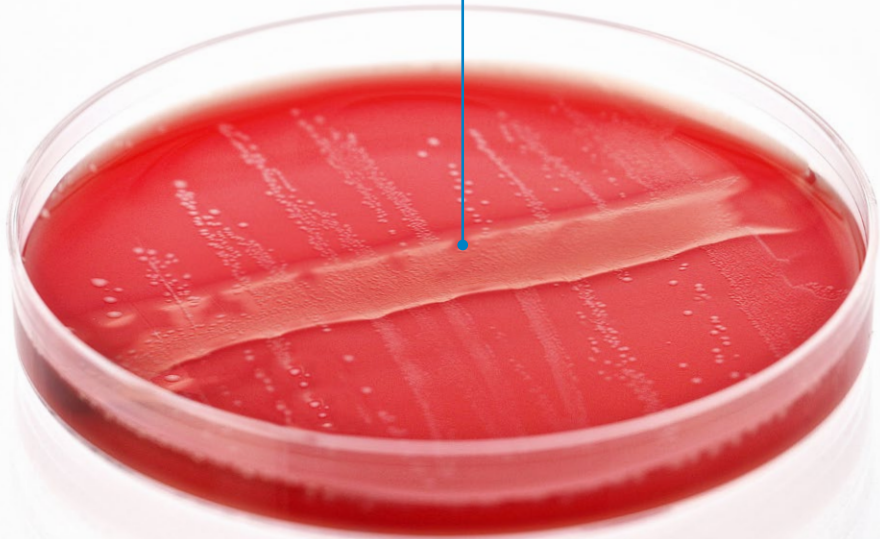
## **Quality**

Hardy Diagnostics is known for manufacturing quality media for microbiologists since 1980.



Bovine Blood Agar Plate, Cat. no. A188

Enhanced hemolysis with addition of Beta Toxin (positive CAMP reaction)



- Our Bovine Blood Agar uses bovine blood cells that are triple washed for improved sensitivity.
- Bovine Blood Agar is used for the detection of *Streptococcus agalactiae* and *Staphylococcus aureus*.
- The addition of Beta Toxin on Bovine Blood Agar aids in the identification of *Streptococcus agalactiae* by using a modified CAMP test.
- *Staphylococcus aureus* can be confirmed within one minute by using the StaphTex™ Blue Kit.

### Bovine Blood Agar Plate

A general purpose media for the isolation and differentiation of mastitis-causing bacteria. Used to presumptively identify *Staphylococcus* and *Streptococcus* species based on colony morphology and patterns of hemolysis.

15x100mm plate, 10/pk.....A188

### Bovine Blood Agar Plate with Esculin

Contains esculin (full strength) to differentiate group D streptococci from *Streptococcus agalactiae*, as *S. agalactiae* is not capable of esculin hydrolysis. When esculin is hydrolyzed by organisms it forms dextrose and esculetin, which react with a compound in the media to produce a darkening or blackness around the colonies.

15x100mm plate, 10/pk.....A189

### Bovine Blood Agar with Esculin, Modified (Washed Cow Blood Agar)

Bovine Blood Agar with Esculin, Modified is similar to Bovine Blood Agar with Esculin, except with half-strength esculin. Also known as Washed Cow Blood Agar.

15x100mm plate, 10/pk.....A186

### Mycoplasma Agar & Broth

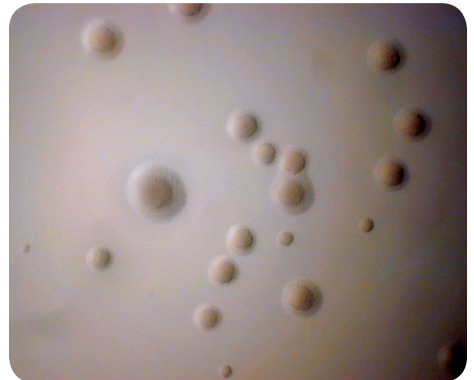
Hardy Diagnostics Mycoplasma Agar is formulated with the necessary nutrients and selective antibiotics for the reliable isolation of *Mycoplasma*. The broth is for enrichment of the specimen before plating.

### Agar Plate

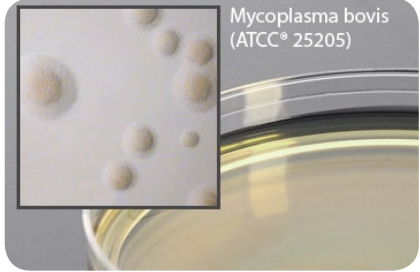
15x100mm plate, 10/pk.....G102

### Broth Tube

13x100mm tube, 4ml fill, 20/pk.....R102



Mycoplasma bovis  
(ATCC® 25205)



### Mycoplasma Agar w/Cefoperazone

For the detection of Mycoplasma spp. associated with bovine mastitis.

18ml fill, 15x100mm plate, 10/pk.....G212

### Bovine Selective Strep Agar

For the selective isolation of *Streptococcus* species from bovine mastitis specimens. Also known as TKT Agar, CAMP Agar, or Modified Edwards Agar.

15x100mm plate, 10/pk .....A143

### Bovine Selective Staph Agar

For the selective isolation of *Staphylococcus* species from bovine mastitis specimens. 15x100mm plate, 10/pk.....A157

### Mastitis Biplate

Bovine Blood Agar with Esculin / MacConkey Agar

15x100mm biplate, 10/pk.....J129

### Mastitis Triplate

Bovine Selective Strep / MacConkey Agar / Blood Agar

15x100mm triplate, 10/pk.....J312

### Beta Toxin

For CAMP test, 25ml, each ..... Z306

### Cotton Swab

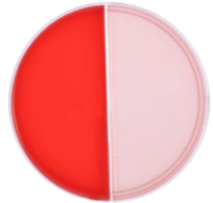
Sterile, wood shaft, individually wrapped

100/box.....HD258061WC

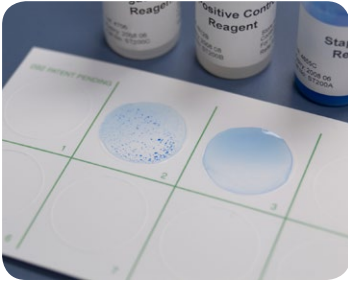
### Tryptic Soy Agar with 5% Blood and .1% Esculin

Recommended for use in the screening of dairy products. This product is not intended to be used for the diagnosis of human disease.

15x100mm plate, 10/pk.....A19BX



Beta Toxin,  
Cat. no. Z306



### StaphTex™ Blue Kit

A rapid latex agglutination kit which tests for both the Clumping Factor and Protein A found in *Staphylococcus aureus*. The entire procedure to identify *Staphylococcus aureus* takes less than one minute!

50 tests.....ST50  
 200 tests.....ST200  
 1000 tests.....ST1000



### StrepPRO™ Streptococcal Grouping Kit

Rapid latex agglutination test for *Streptococcus* Lancefield grouping, includes A, B, C, D, F, G latex, controls, extraction reagents, cards, and mixing sticks.

60 tests.....PLO30HD



### California Mastitis Kit

For the rapid cowside detection of subclinical mastitis. A simple, accurate, and inexpensive method of determining mastitis problems and for overall herd monitoring. Immediately detects elevated somatic cell counts in bulk tank milk or within individual quarters. Includes complete instructions and record charts in English and Spanish.

Approx. 350 tests.....CMTKIT





### InPouch TF-Bovine

*Trichomonas foetus* in cattle is a sexually transmitted infection and is associated with aborted calves, low birth weight, or delayed calving, which can result in decreased herd yields of 8-29%. Bull infection rates are 6-8%, but have been found to be as high as 44% in some rangeland areas of the Western US. Bovine Trichomoniasis is caused by the flagellated protozoan, *Trichomonas foetus*.

InPouch™ is used for the detection of non-specific trichomonads in bovines, *Trichomonas gallinae* in avian, and *T. suis* in swine.

- Requires less hands-on time than wetmount.
- Two procedures are combined into one test (culture and microscopic identification). Pouch with media format.

10 test.....	111010
100 test.....	111003



### Pasteurization Kit

Alkaline phosphatase is an enzyme naturally produced by mammary cells and present in cow's milk. Alkaline phosphatase is inactivated at a higher temperature than is required to kill non-spore-forming bacterial pathogens. Decreased activity of alkaline phosphatase can be used to determine that milk was pasteurized properly and that the pasteurized milk is not contaminated with raw milk. Alkaline phosphatase is detected by its ability to cleave phenolphthalein monophosphate, releasing phenolphthalein. Hardy Diagnostics Alkaline Phosphatase Kit is based on the Rutgers method, which is a stable and sensitive method that provides an easy to interpret color read out within 30 minutes.

125 tests.....	Z132
----------------	------

# Bovine Mastitis

Products for Microbiological Analysis



#### Headquarters

1430 West McCoy Lane  
Santa Maria, CA 93455  
800.266.2222 : phone  
Sales@HardyDiagnostics.com  
www.HardyDiagnostics.com

#### Distribution Centers

Santa Maria, California  
Olympia, Washington  
Salt Lake City, Utah  
Phoenix, Arizona  
Dallas, Texas  
Springboro, Ohio  
Lake City, Florida  
Albany, New York  
Raleigh, North Carolina



ISO 13485  
FM572526



Made in the USA



Online Ordering Available