

Q-Swab™

Sample Collection & Delivery Device

Part No.: QS1000 (Buffered Peptone Water) & QS1200 (Letheen)

QTY: 250 devices



Description/ Intended Use:

Hygiena Q-Swab is an all-in-one device containing medium for environmental surface samples. Each device is ready-to-use and can be used in combination with conventional agar plates or sample-ready media systems.

Directions:

Watch an instructional demo at www.youtube.com/HygienaTV

1. Allow Q-Swab to acclimate to ambient temperature (21 – 25 °C) before use. Q-Swab can be used dry (as is) or pre-wetted. To use Q-Swab pre-wetted, hold swab tube firmly and use thumb and forefinger to break Snap-Valve by bending bulb forward and backward. Squeeze bulb twice to expel liquid into tube, wetting swab tip.

2. Holding tube firmly, twist and pull swab out of tube.

3. Thoroughly swab a standard 10 x 10 cm (4 x 4 inches) area for a typical flat surface. For irregular surfaces, ensure swabbing technique remains consistent for each test and swab a large enough area to collect a representative sample.

Important swabbing technique tips:

- Do not touch swab or inside of sample device with fingers.
- Rotate swab while collecting sample to maximize sample collection on swab tip.
- Apply sufficient pressure to create flex in swab shaft.
- Swab in a crisscross pattern vertically, horizontally, and in both diagonal directions.
- Refer to instructional video for demonstration: www.youtube.com/HygienaTV

4. Replace swab in tube. If Q-Swab was used dry, hold swab tube firmly and use thumb and forefinger to break Snap-Valve by bending bulb forward and backward. Squeeze bulb twice to expel liquid into tube.

5. Q-Swab may now be delivered to laboratory for inoculation. Shake device for 10 seconds to mix sample.

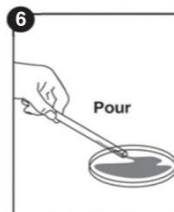
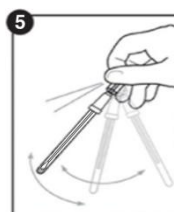
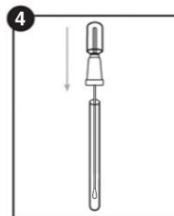
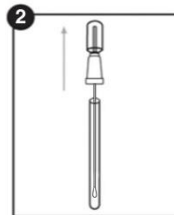
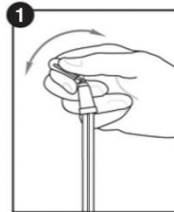
6. Remove swab from tube and either pour contents onto dried gel media or streak agar plates for cultures as needed. Proceed per manufacturer instructions.

Storage & Shelf Life:

QS1000: 18 months at 2 – 8 °C

QS1200: 18 months at 2 – 25 °C

Refer to device label for expiration date.



Disposal:

Used devices that confirm positive results of bacteria may be a biohazard and should be disposed of safely in compliance with Good Laboratory Practice and Health and Safety regulations. Disinfect before disposal. Q-Swab devices can be disinfected by autoclaving or soaking in 20% bleach for 1 hour.

Safety & Precautions:

Components of Q-Swab do not pose any health risk when used in accordance with Good Laboratory Practice and procedures in these instructions. Devices are designed for single use.

- Do not use devices after expiration date.
- Sampling should be done aseptically to avoid cross contamination.

For further safety instruction, refer to Q-Swab Safety Data Sheet (SDS).

Hygiena Liability:

As with any culture medium, Q-Swab results do not constitute a guarantee of quality of food, beverage products or processes that are tested with these devices. Hygiena will not be liable to user or others for any loss or damage, whether direct or indirect, incidental or consequential from use of these devices. If this product is proven to be defective, Hygiena's sole obligation will be to replace product, or at its discretion, refund the purchase price. Promptly notify Hygiena within 5 days of discovery of any suspected defect and return product to Hygiena. Please call Customer Service for a Returned Goods Authorization Number.

Contact Information:

If more information is required, please visit us at www.hygiena.com or contact us at:

Hygiena — Americas

Phone: 805.388.8007

Fax: 805.388.5531

E-mail: info@hygiena.com

Hygiena — International

Phone: +44 (0)1923 818821

Fax: +44 (0)1923 818825

E-mail: enquiries@hygiena.com